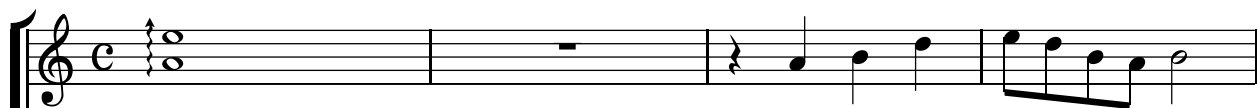


# 箏二重奏(1)

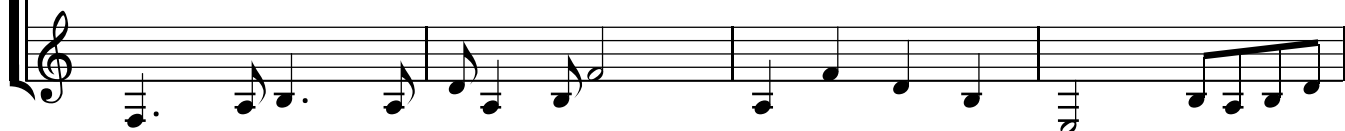
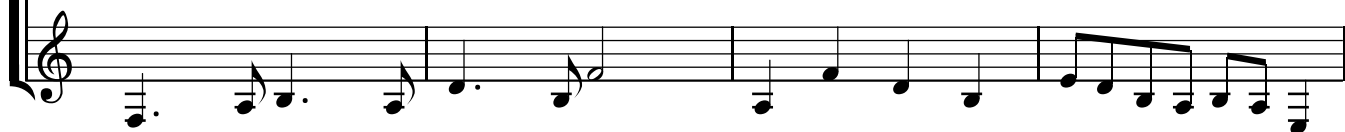
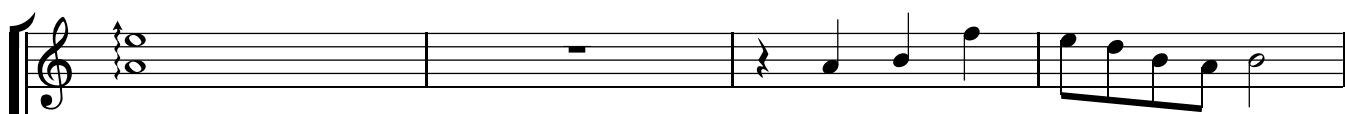
p.giro

♩ = 90

箏1



箏2



The first system consists of two staves. The upper staff features a melodic line with eighth-note patterns and some sixteenth-note runs. The lower staff provides a harmonic accompaniment with dotted quarter notes and eighth-note patterns.

The second system continues the musical piece. It includes a *rit.* (ritardando) marking in the lower staff, indicating a gradual deceleration of the tempo. The notation includes various rhythmic values and rests, ending with a double bar line.